

AMERICAN BANK CENTER ARENA
TECH PACK

2023-2024

AmericanBank  CENTER

VENUE
by the bay

WWW.AMERICANBANKCENTER.COM

1901 N. SHORELINE BLVD, CORPUS CHRISTI, TX 78414

 | 

Building Specifics

Loading Docks

American Bank Center has a 15-grid system that is positioned 62' from the floor. The maximum weight permitted on the end stage grid is 130,000 pounds of evenly distributed weight and 76,000 for a center stage show. The facility provides a fall protection system, and all safeties must be adhered to. The Event Manager must receive all weight loads in advance. Your Event Manager can provide additional rigging information by request.

Scoreboard, Video, Ribbon Boards

- Center Hung - 13' 7.8" Tall x 17'8" Wide Corner Panels (Non-Backlit) Approx. 11'5.25" x 3'2.25"
- Ribbon Boards 2.46' x 210.04'

Sound System and Communication

Shure SM58 handheld wired mics and two Beta87 handheld wireless mics are available upon request. Two-channel Clear-Com communications are also available. Patch panels located around the arena include XLR, BNC and Clear-Com (XLR) connections. The audio/video control room is located on the second level above section 106.

Spotlights

American Bank Center has 4-Super Troopers.

Stagehand Labor

The facility uses Antares Staging and Rigging for production use. Contact your Event Manager to connect.

Staging

The facility features a "Stage Right" Stage and Barricade (80'). Sections are 4'x8' (150) with a black tech-stage surface. Accessories included are accessible ramp, stairs, skirting and guardrails. The standard mixer stage is a 12' x 24' platform with heights ranging from 8"-24".

Telecommunications

Phones and fax lines may be set in almost any area of the facility. All orders for phone line installation must be received by your Event Manager a minimum of 5 days prior to your event.

Television Production Power and Cabling

Various gang boxes and junctions are available in the Arena. Contact the building technical representative or your Event Manager for specific information pertaining to your needs.

Dressing Rooms

4 rooms (Locker Rooms) 1 Star Room with 4 closed door bathroom/showers

Production Parking

Show parking at American Bank Center is located in the loading dock, which is located off N Chaparral St. on the west side of the building. Prior to the event, please coordinate all parking requirements with your Event Manager.

Facility Fee

All tickets are subject to facility and maintenance fee. The fee is typically \$4 per ticket for all ticketed events. The fee must be included in the advertised ticket price.

Concessions/Catering/Alcohol

Services are provided exclusively by Oak View Group Hospitality, which offers food and beverage services to satisfy any taste and any group size. Please contact Oak View Group Hospitality prior to your event for a catering quote. If you wish to provide your own catering please discuss the catering buyout fee with venue Event Manager. Per our liquor license, all alcohol on the property must be provided by Oak View Group Hospitality.

Merchandising

The right to sell any merchandise, product or other item must be coordinated through venue Event Manager. The sale of any and all merchandise is prohibited without prior approval. A percentage of sales will be collected by the venue at the conclusion of the event.

Pyro

Allowed with permit. Lessee, at its sole expense, shall be responsible for pyro permit(s). Contact venue Event Manager at least ninety (90) days in advance to an event needing pyro.

Sales Tax

8.25%; all ticketed admissions and equipment rentals are subject to tax.

Security

Event Manager will coordinate uniformed police officers and contracted security personnel based on your events needs. It is the policy of American Bank Center to hand-held wand every patron and check every bag.

Solicitations

No collection or donation whether for charity or otherwise, shall be made, attempted or announced on the premises without the written approval of management of the Complex.

Ticketing & Box Office

Ticketmaster is the exclusive ticket seller for all American Bank Center events. The ticket office requests your event information a minimum of two weeks prior to the on sale. Please contact our Box Office Manager.

Box Office Hours: Monday–Friday 10am–6pm. Open Saturdays & Sundays 2 hours prior to show time on event days only.

Rigging

American Bank Center has a 15-grid system that is positioned 62' from the floor. The maximum weight permitted on the stage grid is 120,000 pounds of evenly distributed weight and 76,000 for a center stage show. The facility provides a fall protection system and all safeties must be adhered to. The Event Manager must receive all weight loads in advance. Your Event Manager can provide additional rigging information by request.

Venue Parking

PARKING

Show parking at American Bank Center is located in the loading dock off Chaparral St. on the west side of the building. Prior to the event, please coordinate all parking requirements with your Event Manager.



Emergency Route

CHRISTUS Spohn Hospital Corpus Christi

Shoreline (LEVEL II TRAUMA)
600 Elizabeth St. Corpus Christi, TX 78404
(2.3 miles from venue)
Phone (361) 881-3000 | ER OPEN 24hrs

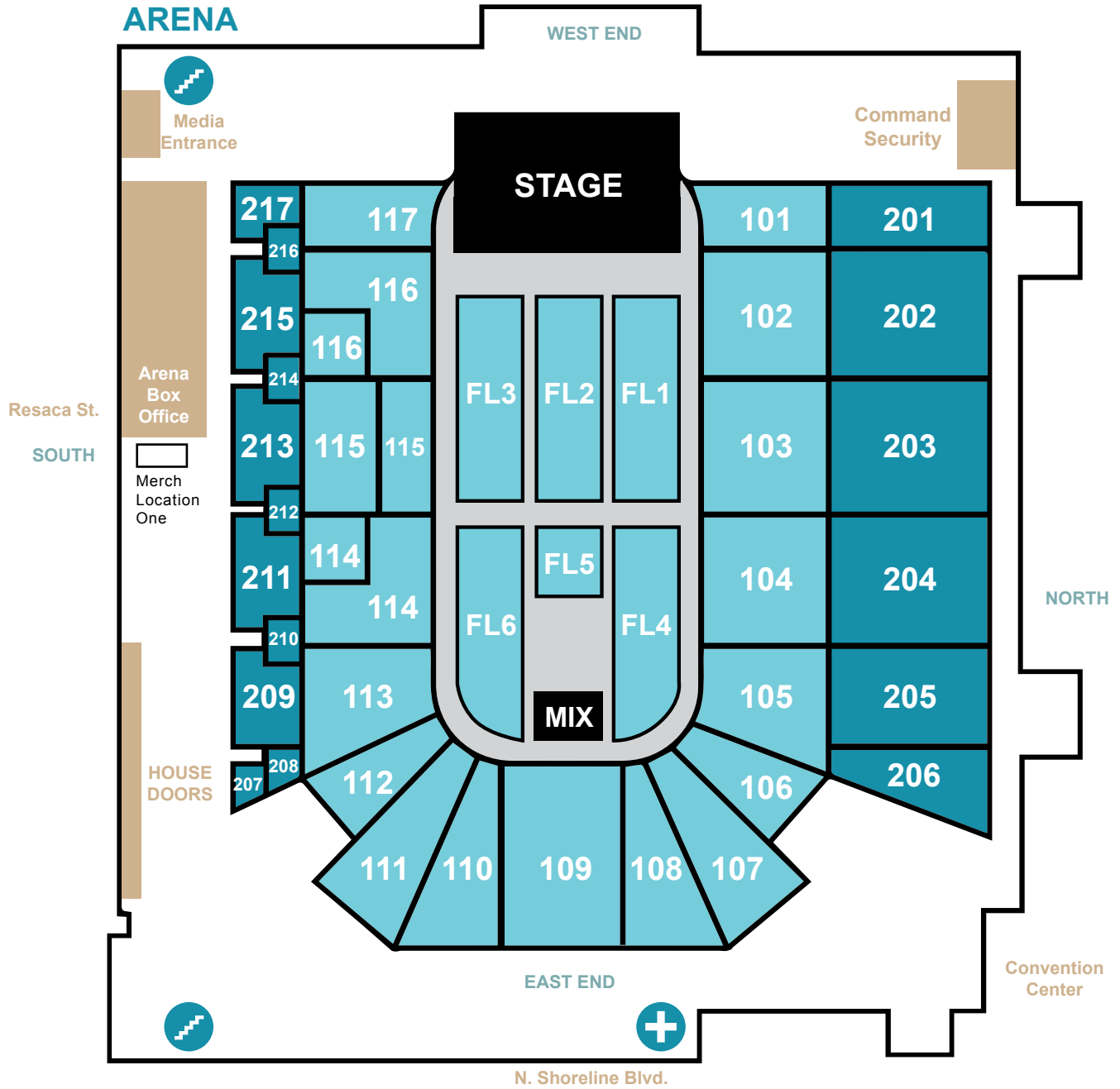
Corpus Christi Fire Station 1

514 Belden St., Corpus Christi, TX 78401
(.08 miles from venue)
Phone (361) 826-8054



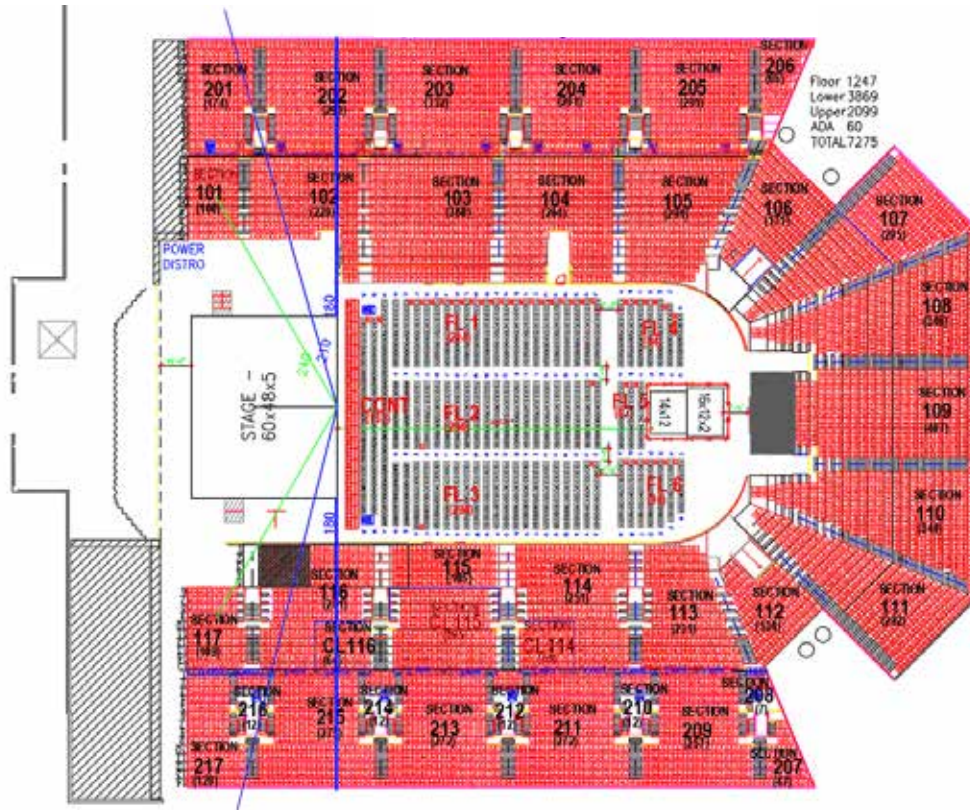
Arena Floor

CONCOURSE 1ST FLOOR



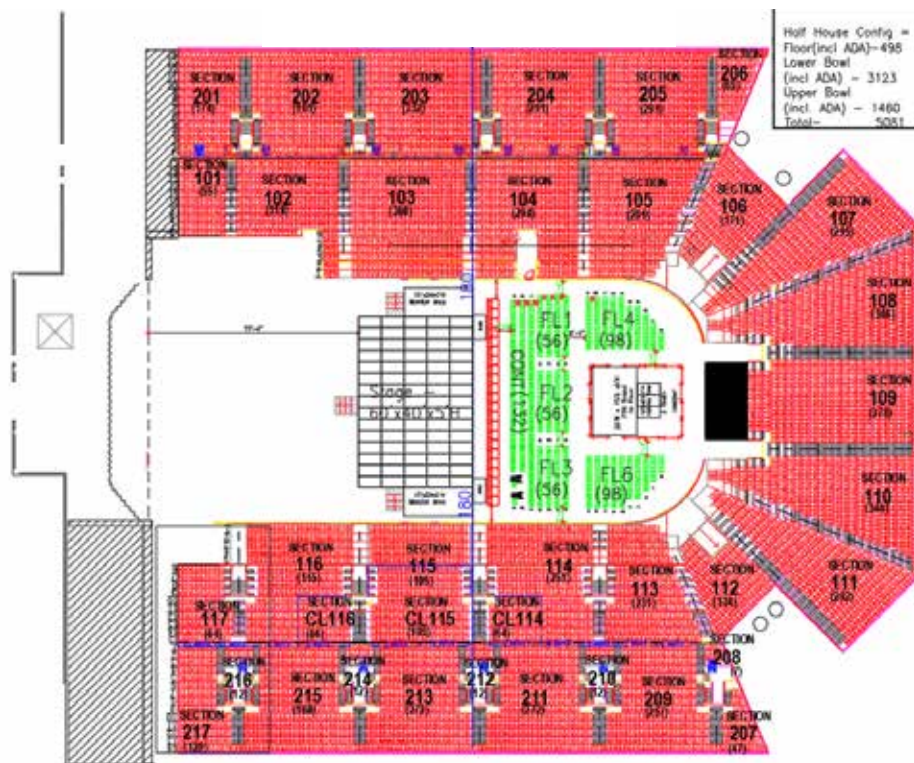
Arena Floor

FULL HOUSE Typical End Stage 180, 210, 240



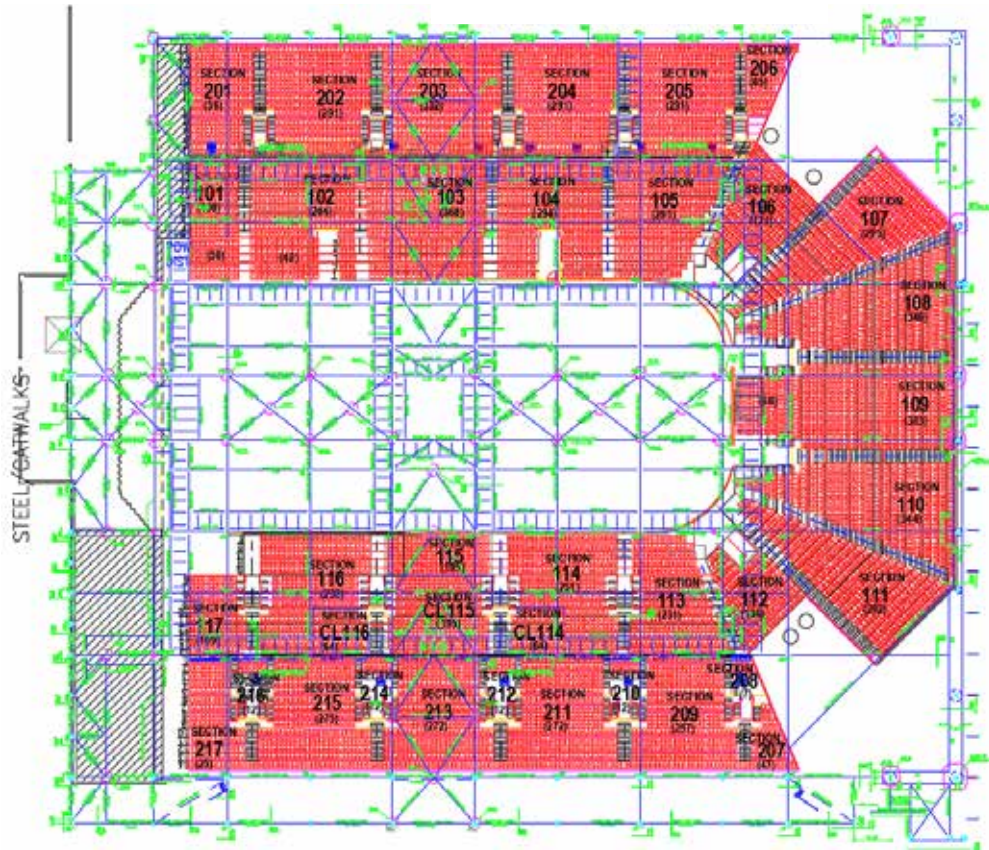
Arena Floor

HALF HOUSE Half House Configuration



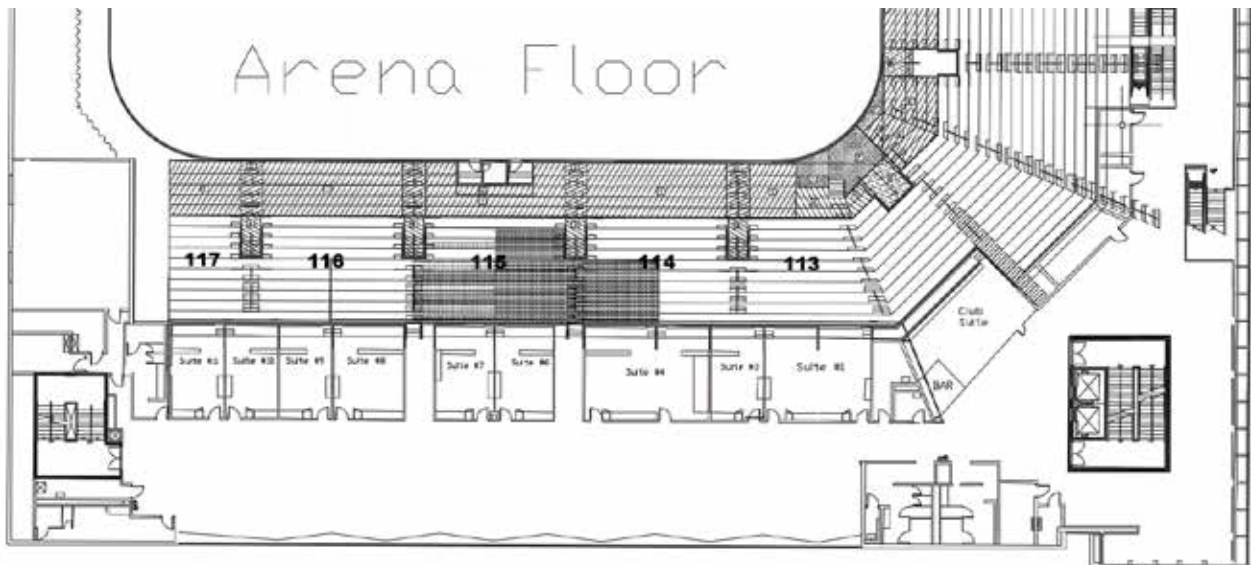
Arena

STEEL AND CATWALK OVERLAYS



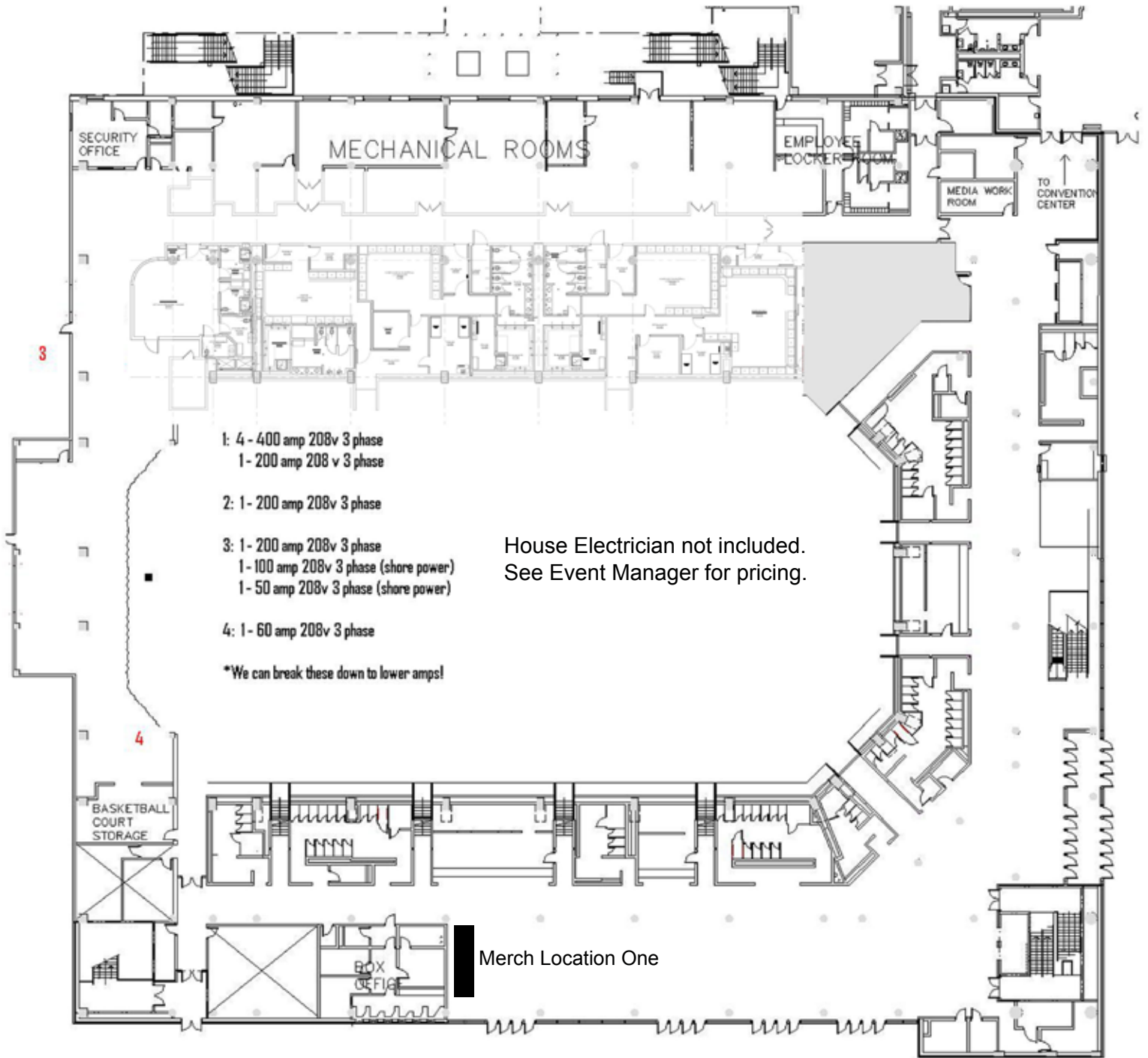
SUITES

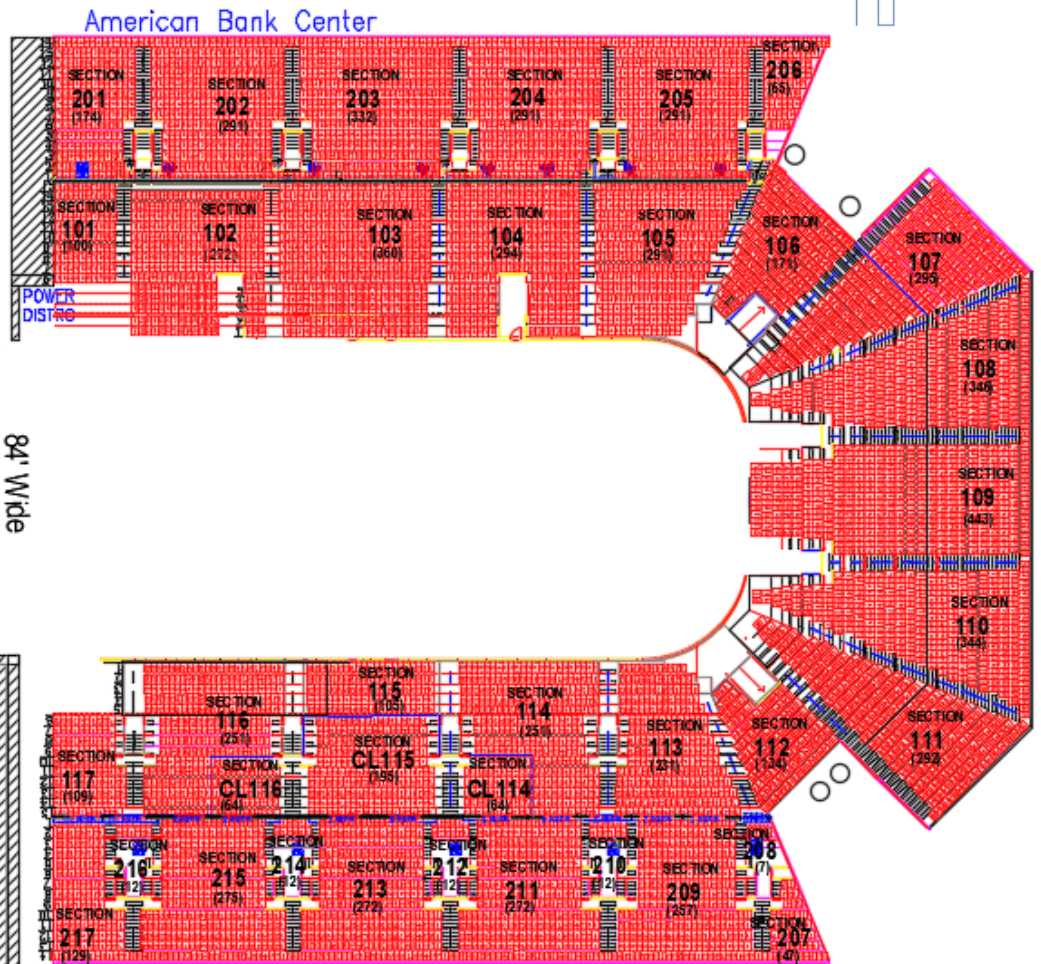
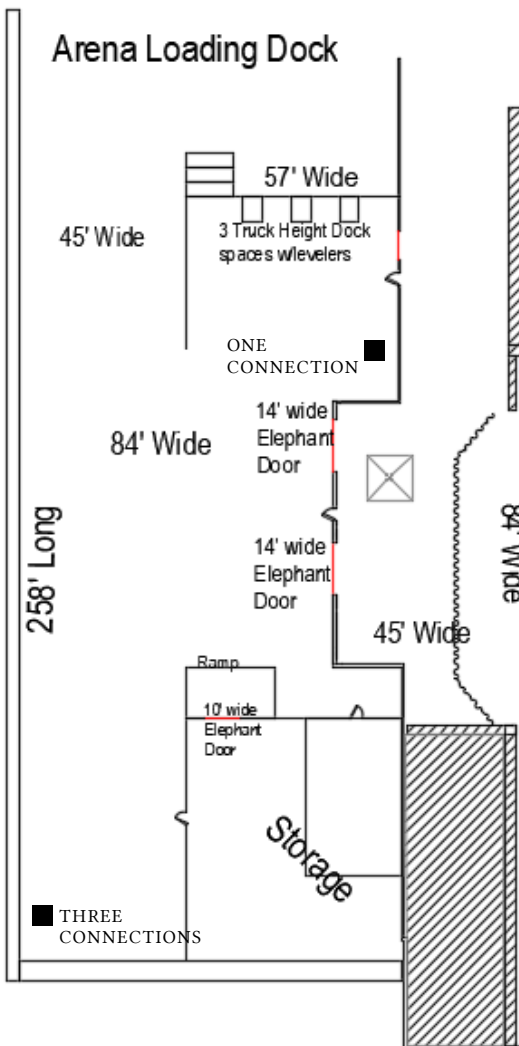
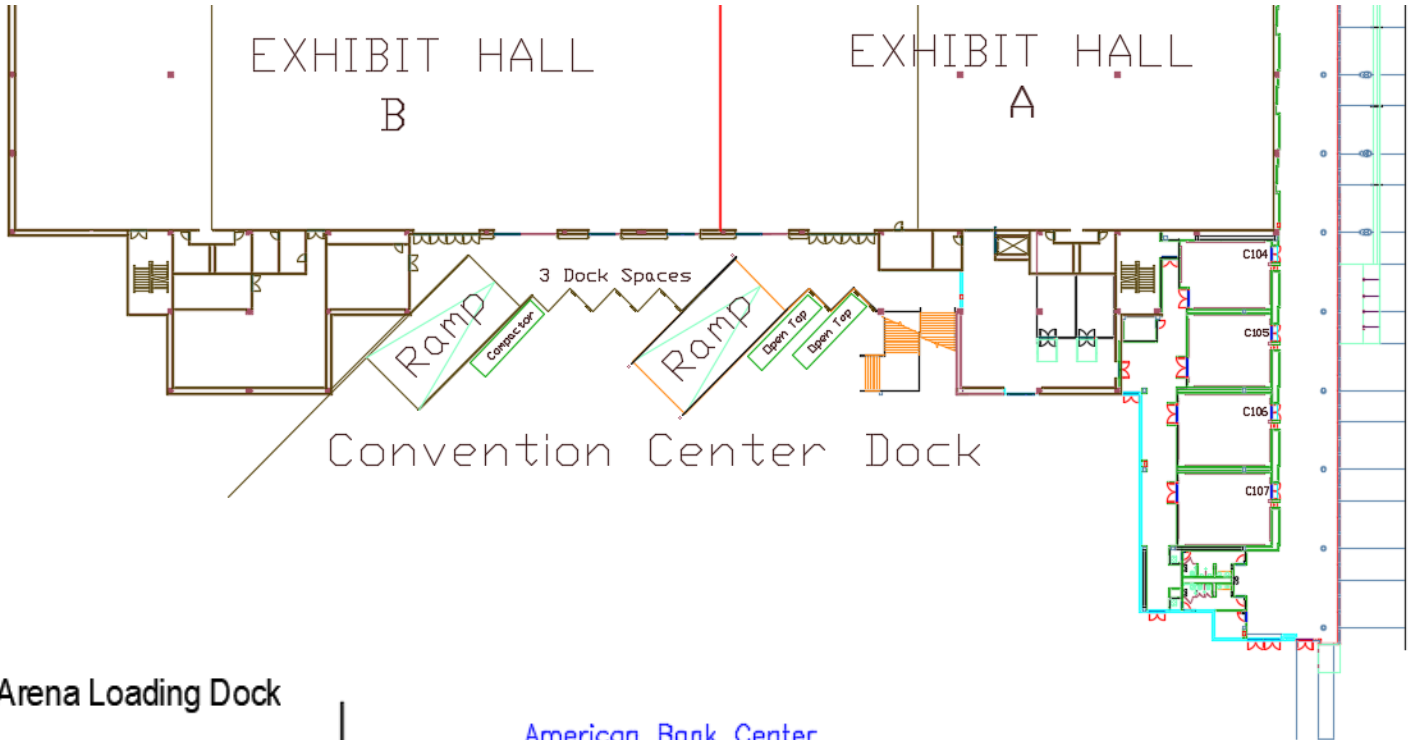
Luxury & Premium Seating sold by our experienced OVG360 Premium Department.



Arena Floor

SHOW POWER





■ 4 SHORE POWER CONNECTIONS